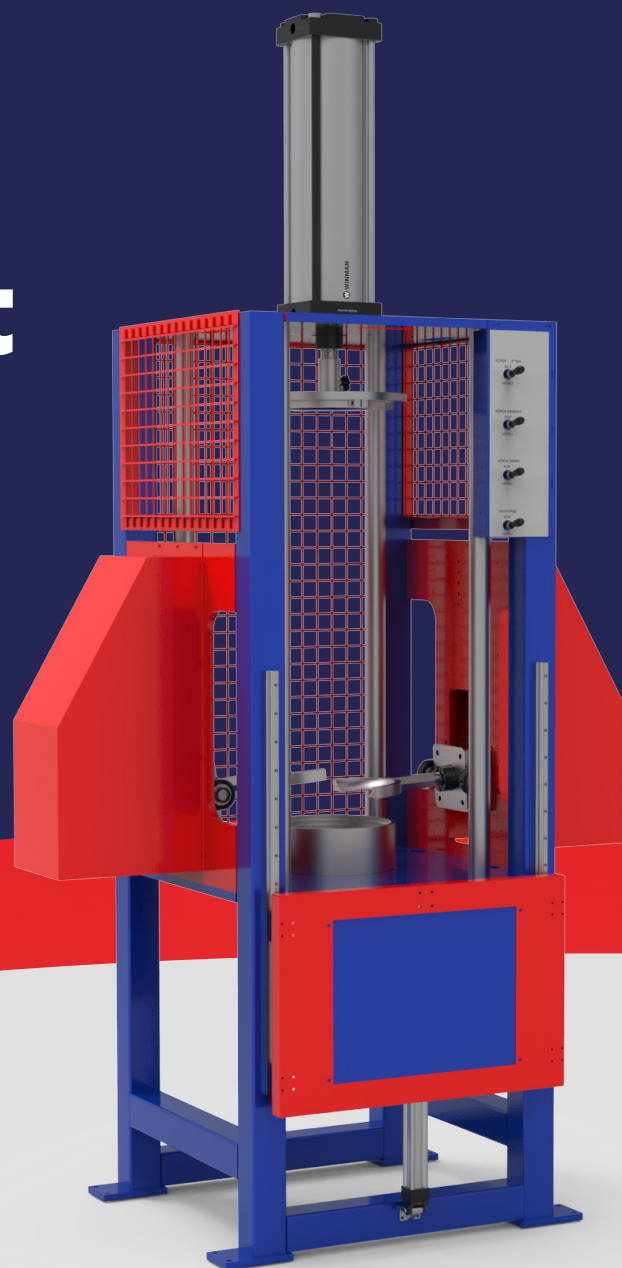


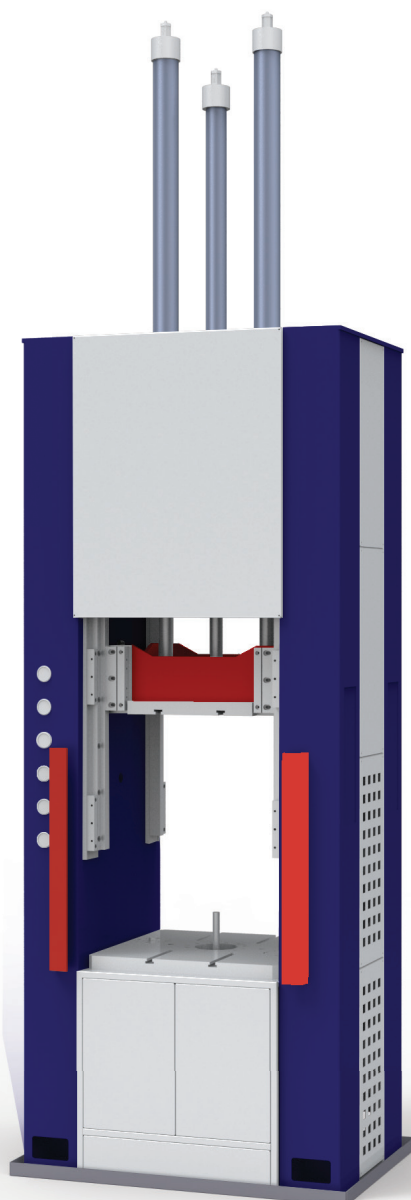


Auxiliary Equipment Machine Group Catalogue

2023-2024



www.fabioairsprings.com



FMU 20-01

Steam Vulcanization Press

Nominal Force	20-320 kN	Ram Table Dimensions	890x790 mm
Stroke	1450 mm	Bottom Elevator	800 mm
Return Power	110 kN	Bottom Elevator Stroke	500 mm
Return Speed	130 mm/sec	Bottom Table Dimensions	900x800 mm
Distance Between Table & Ram	400-1800 mm	Working Height	1000 mm
Ram Down Speed	100 mm/sec	Approximate Weight	6000 kg

* Images may not be exactly the same as the products. Our company is not responsible for such situations.

fabioairsprings.com



FMU 20-02

Electrical Vulcanization Press

Dimensions	1260x2260x4260 mm	Return Speed	110 mm/sec
Automatic Moon Stroke	300 mm	Nominal Force	20-240 kN
Ram Stroke	1500 mm	Working Height	850 mm
Down Speed	900 mm/sec	PLC	SIEMENS S7-1200



Image Preparing

FMU 20-09

Convuluted Air Springs Vulcanization Press

Dimensions	2200x3000x950 mm	Heating System	Resistance
Max Working Pressure	220 Bar	Control Module	SIEMENS S7-1200

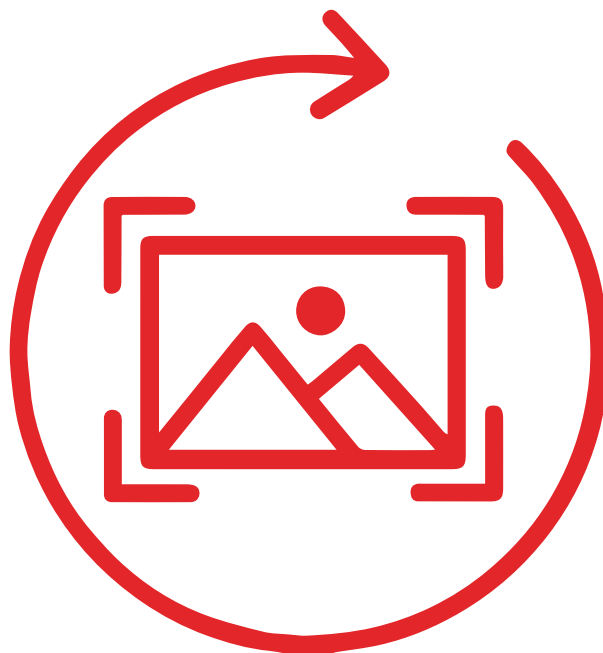


Image Preparing

FMU 20-11

Cabin Air Springs Vulcanization Press

Dimensions	1900x2500x1200 mm	Power	4 kW
Max Pressure	220 Bar	Control	PLC SIEMENS



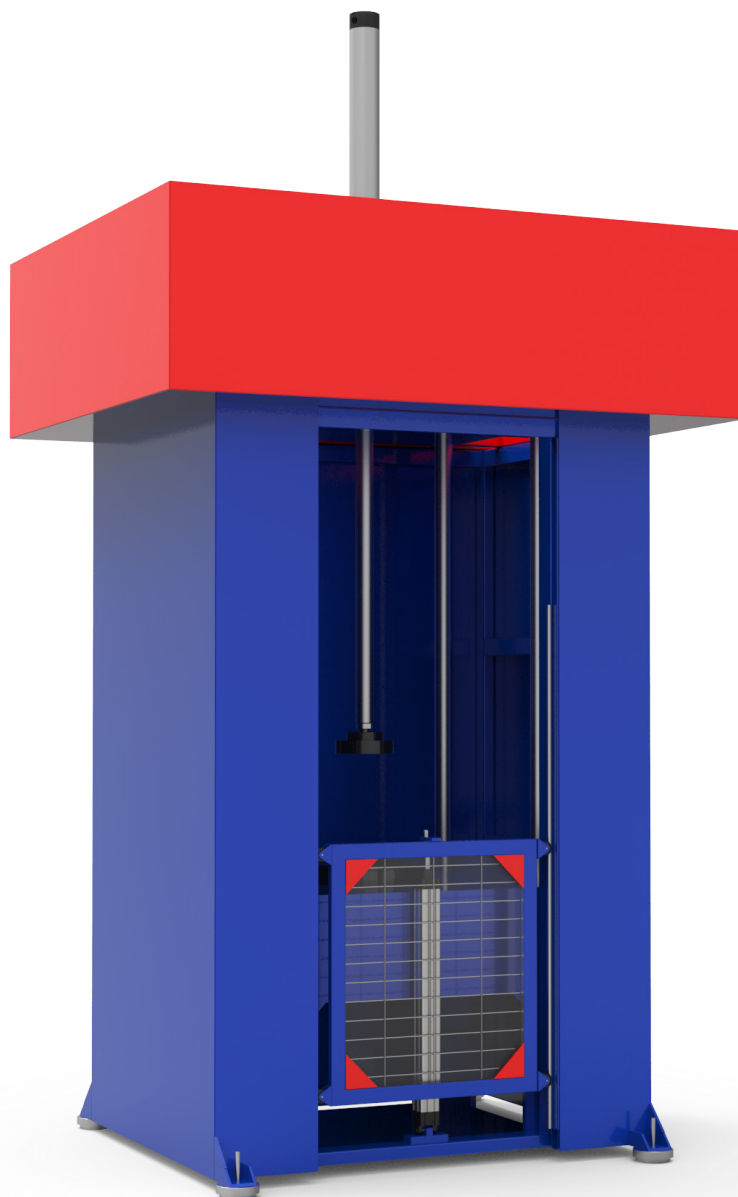
FMM 10-01

Air Springs Off Press

Dimensions	3970x2250x1820 mm	Working Pressure	150 Bar
Return Speed	150 mm/sec	Working Ram Speed	5-30 mm/sec
Stroke	600 mm	Bottom Elevator Stroke	900 mm
Side Grips Stroke	200 mm	Bottom Table Dimensions	900x600 mm
Ram Speed Down	130 mm/sec	Approximate Weight	8500 kg
Nominal Force	1100 kN		

* Images may not be exactly the same as the products. Our company is not responsible for such situations.

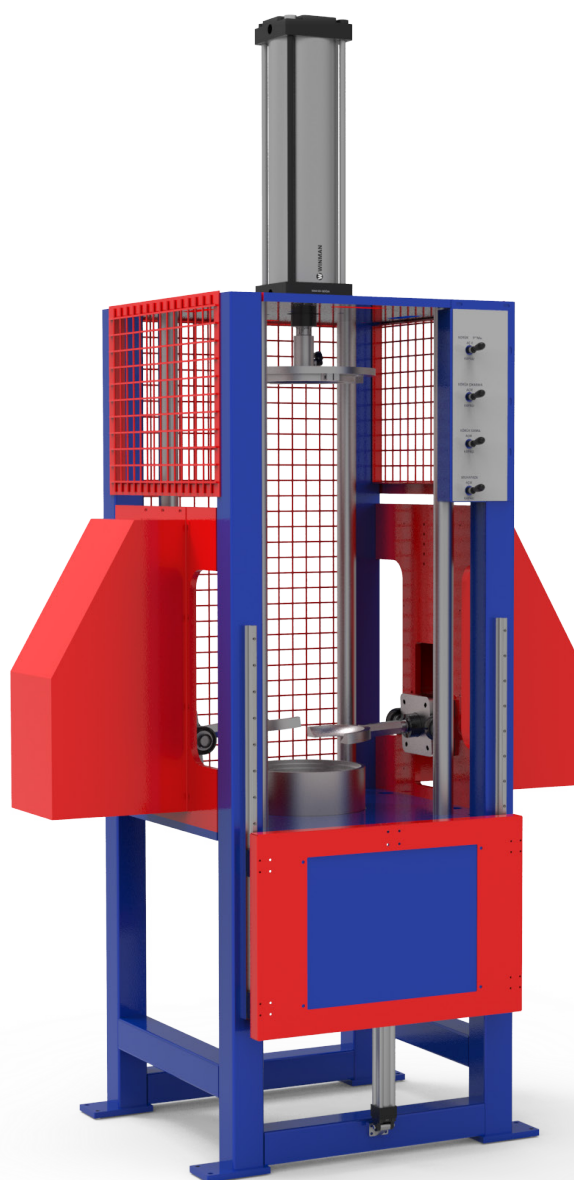
fabioairsprings.com



FMM 10-04

Air Springs Folding & Piston Engagement Press

Dimensions	3500x1825x1400 mm	Distance Between Tables	1400 mm
Up Table Dimensions	100x800 mm	Working Pressure	80 Bar
Pressure	4100 kN	Close Cover Stroke	600 mm
Stroke	1050 mm		



FMM 10-02-2

Piston Fitting Press

Dimensions Ø 610x2800

System Hydraulic

Stroke 850

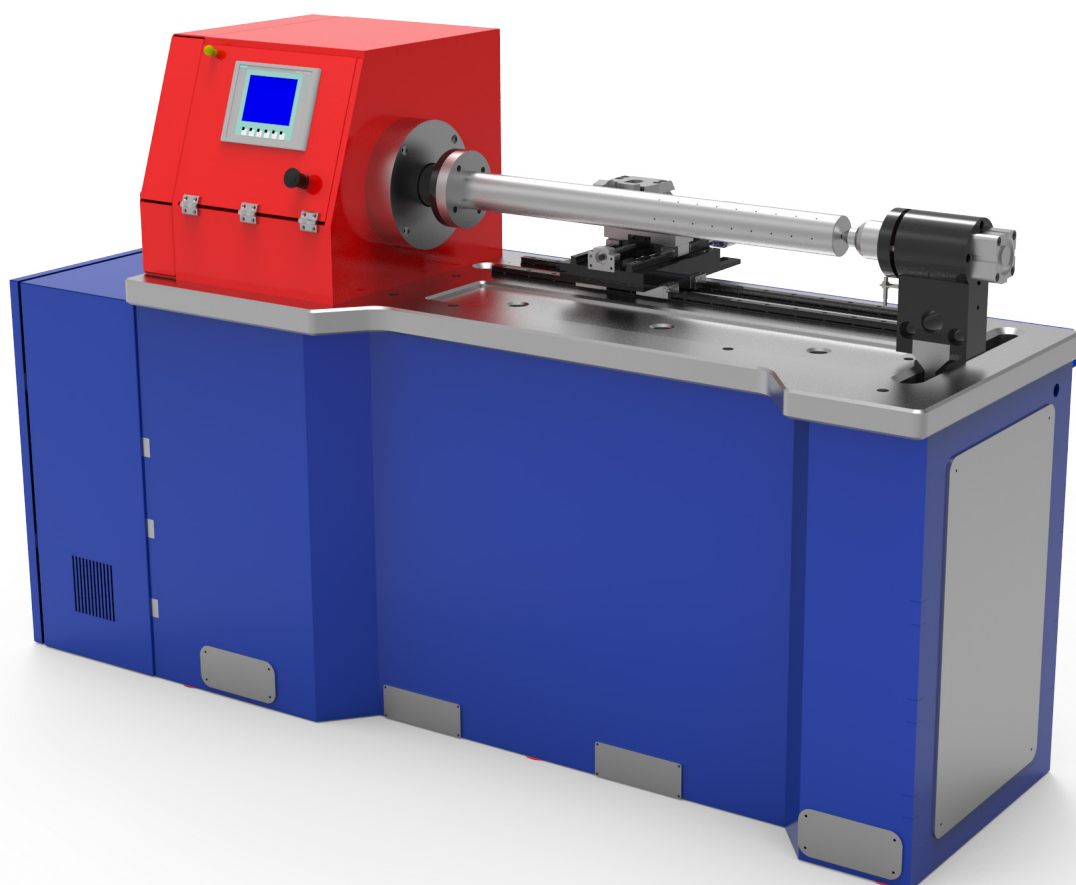
Force 25 kN



FMM 10-03

Chock Press

Dimensions	600x800x2200 mm	Working Pressure	6-8 Bar
Distance Between Tables	1300 mm	Working System	Pneumatic
Stroke	400 mm	Approximate Weight	1000 kg



FMU 20-13

Length Cutting Machine for Cabin Air Springs

Dimensions	2100x1335x845 mm	PLC System	SIEMENS S7-1200
Prescription Record	500 pcs	Servo System	FESTO 0.75 kW 3000 RPM
Engine Power	2.2 kW	Panel	SIEMEN TOUCH KTP 600

* Images may not be exactly the same as the products. Our company is not responsible for such situations.

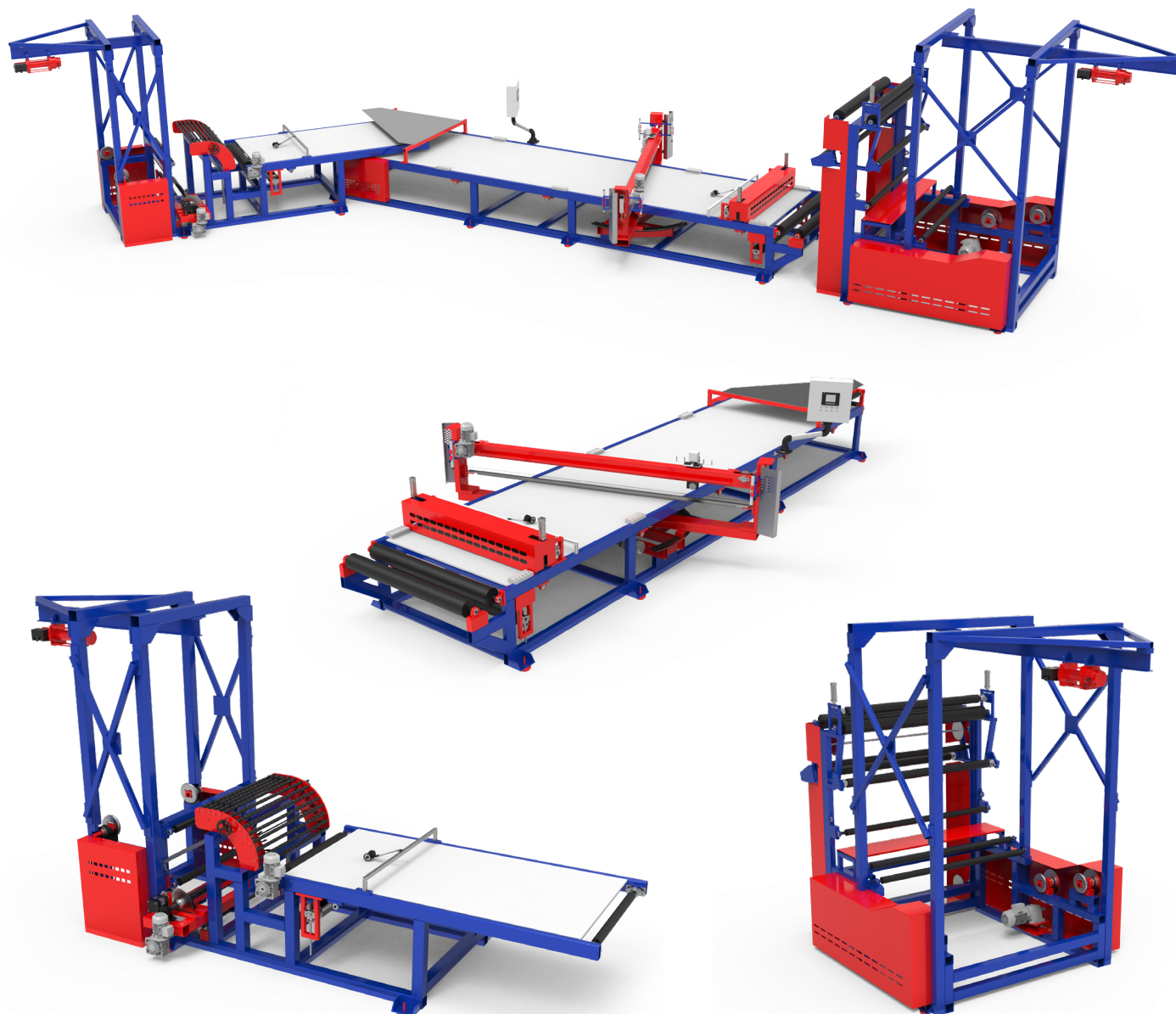
fabioairsprings.com



FMU 20-07

Mold Sandblasting Machine

Dimensions	1200x1200x2500 mm	Working Pressure	6-8 Bar
Sand Type	Glass Sand	Adjustable .	50-500 rpt/sec



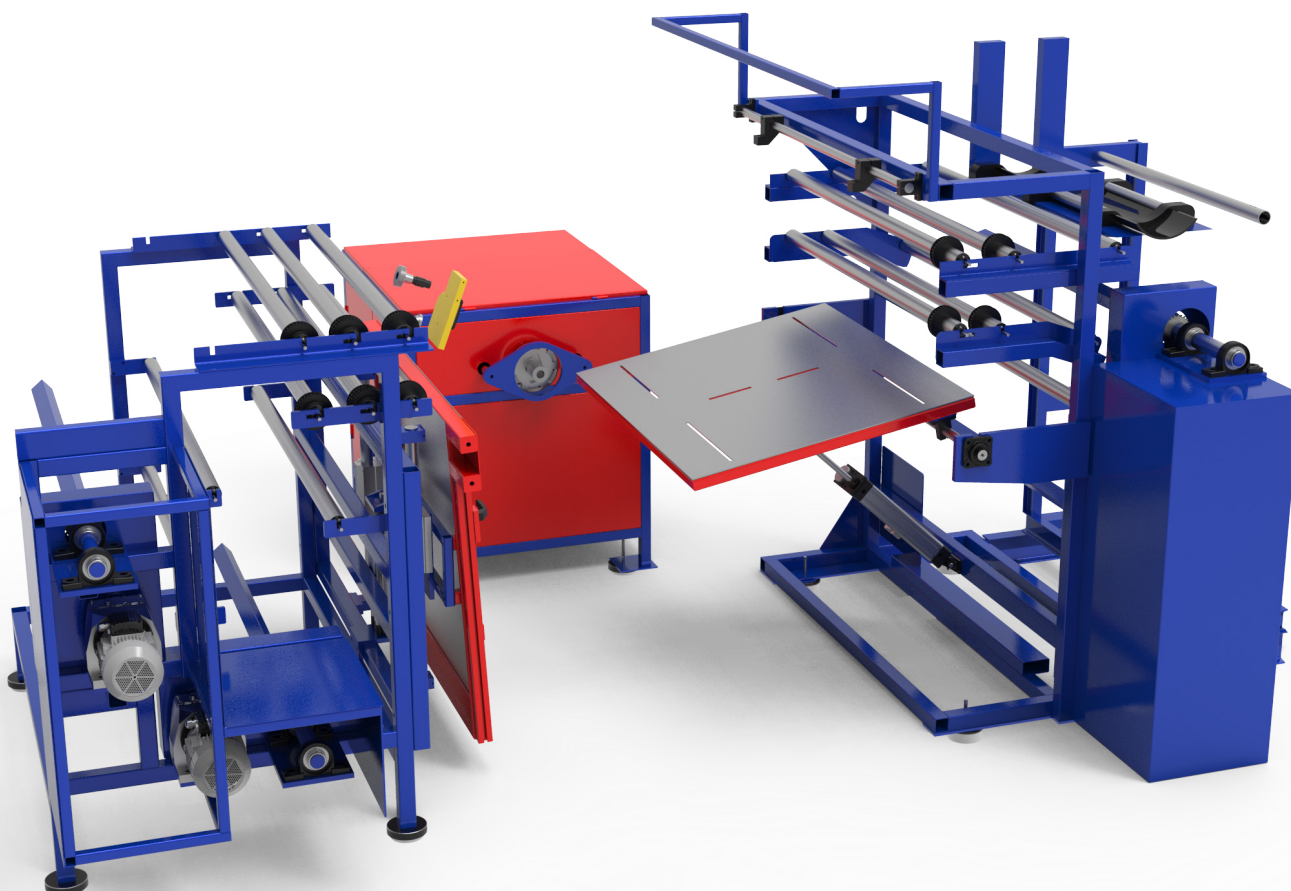
FMU 20-04

Bias Cutter Machine

Dimensions	16250x6650x3660 mm	Loading Crane	2000 kg
Power	16 kW	Servo System	FESTO
Approximate Weight	4500 kg	Tolerance	Length ± 1 / Angle 0.5°
Angle	$45^\circ - 90^\circ$	PLC System	SIEMENS S7-1200
Touch Panel System	SIEMENS KTP-1200	Speed	25 cutting/min
Cord Fabric Roll Dimensions	$\varnothing 1000 \times 1600$	Cutting Rev	3000-5000 RPM

* Images may not be exactly the same as the products. Our company is not responsible for such situations.

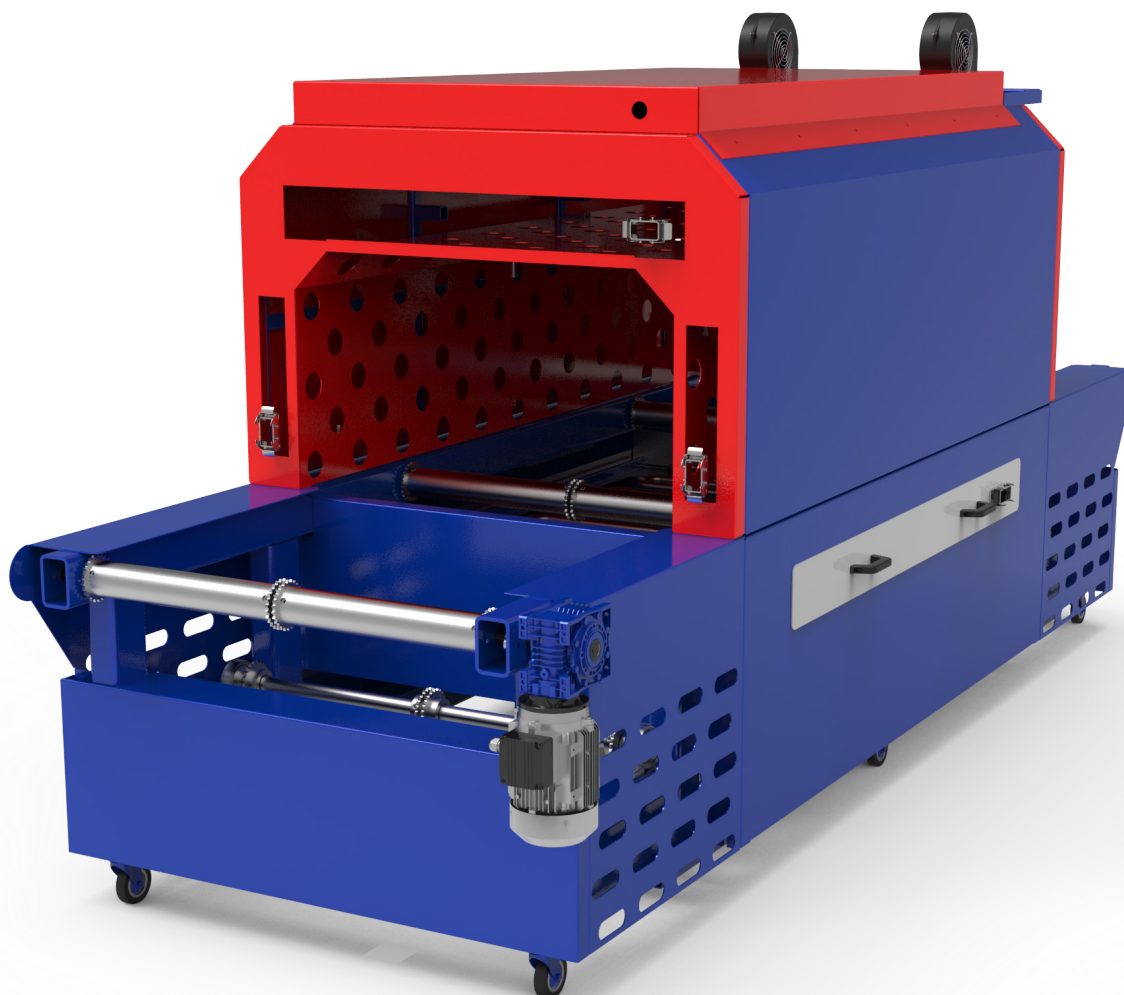
fabioairsprings.com



FMU 20-03

Air Springs Building Machine

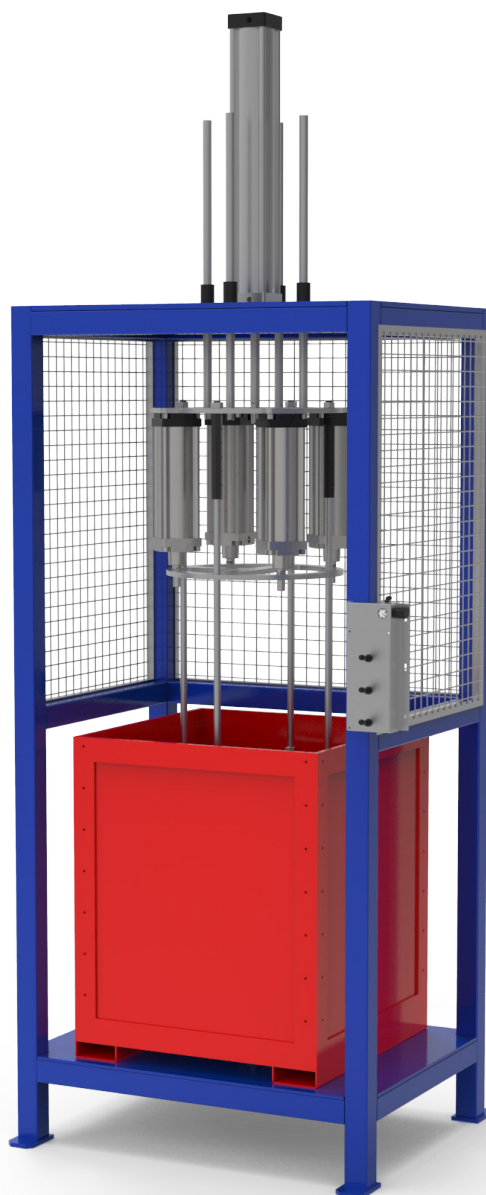
Windable Product Diameters	Ø 50-Ø 500	Control	Foot Switch
Speed of Main Shaft	30-550 RPM	Marker	Line Laser
Power	5x2.2 kW	Drive System	Pneumatic & Electronic
Rubber Feeding System	4 Divided	Approximate Weight	900 kg
Cord Feeding System	2 Divided		



Shrink Machine

* Images may not be exactly the same as the products. Our company is not responsible for such situations.

fabioairsprings.com



FMM 10-05

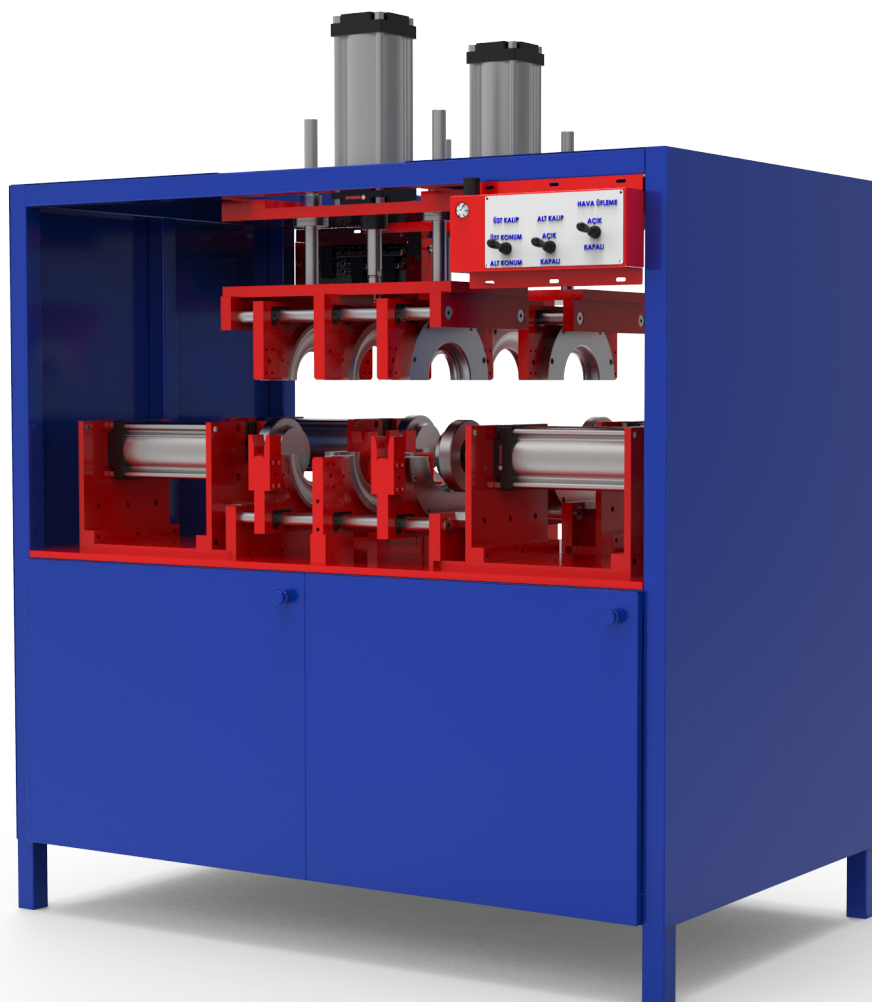
Leak Test Machine

Dimensions 800x800x1970 mm

Test Pressures 6 Bar

Working System Pneumatic

Chamber Dimensions 575x480x350 mm



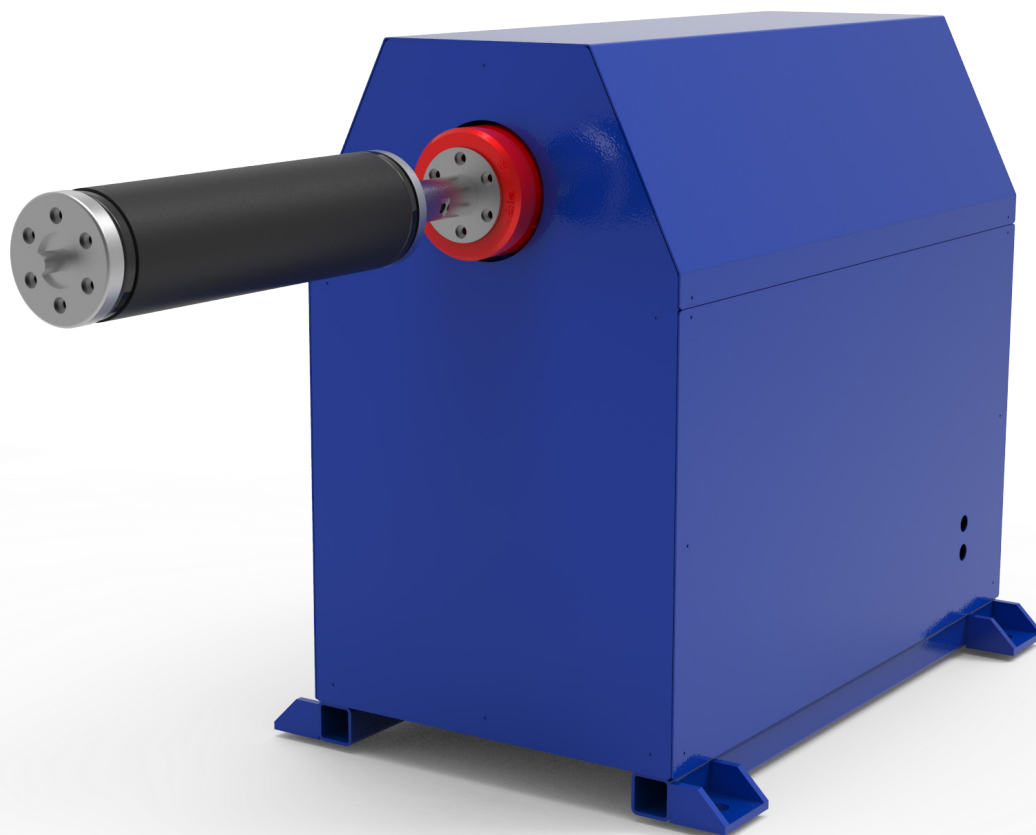
FMU 20-10

Preformed Convoluted Air Springs Machine

Dimensions	1750x750x2600 mm	Working System	Pneumatic SMS
Control	DELTA PLC	Production Dimentions	Ø 100-Ø 520 mm

* Images may not be exactly the same as the products. Our company is not responsible for such situations.

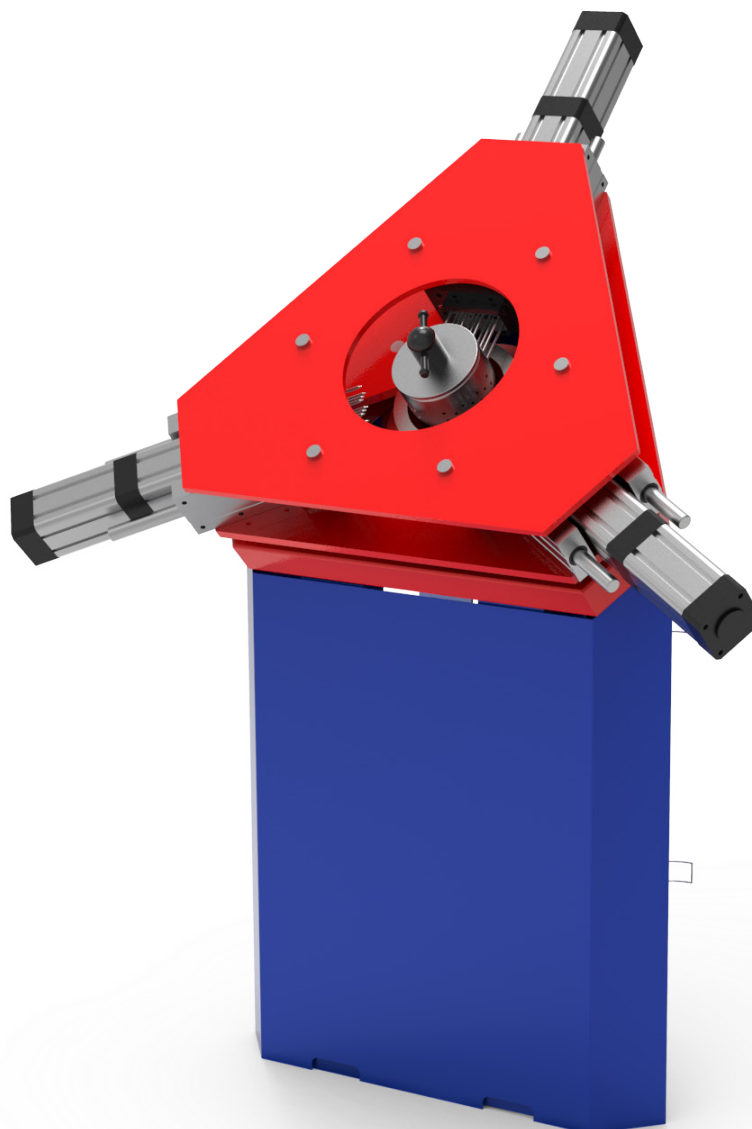
fabioairsprings.com



FMU 20-05

Wiring Machine

Dimensions	1500x400x1750 mm	Electric Motor	1.1 kW
Approximate Weight	200 kg	Process Time	1 min.



FMU 20-06

Air Springs Drilling Station

Dimensions	1500x1100x1100 mm	Drilling Pressure	6 Bar
Motion Stroke	60 mm	Nail Dimesions	Ø 4x80 mm
Piston Stroke	70 mm	Approximate Weight	500 kg
Working Speed	8 pcs/min		

* Images may not be exactly the same as the products. Our company is not responsible for such situations.

fabioairsprings.com

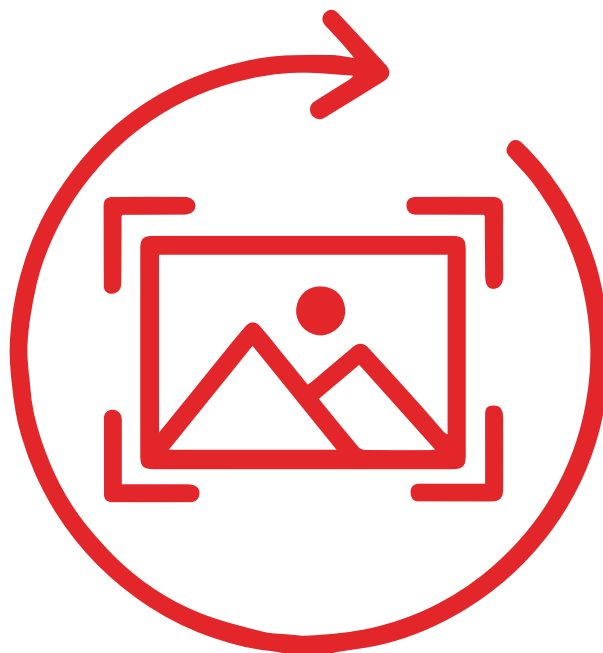


Image Preparing

FMU 20-08

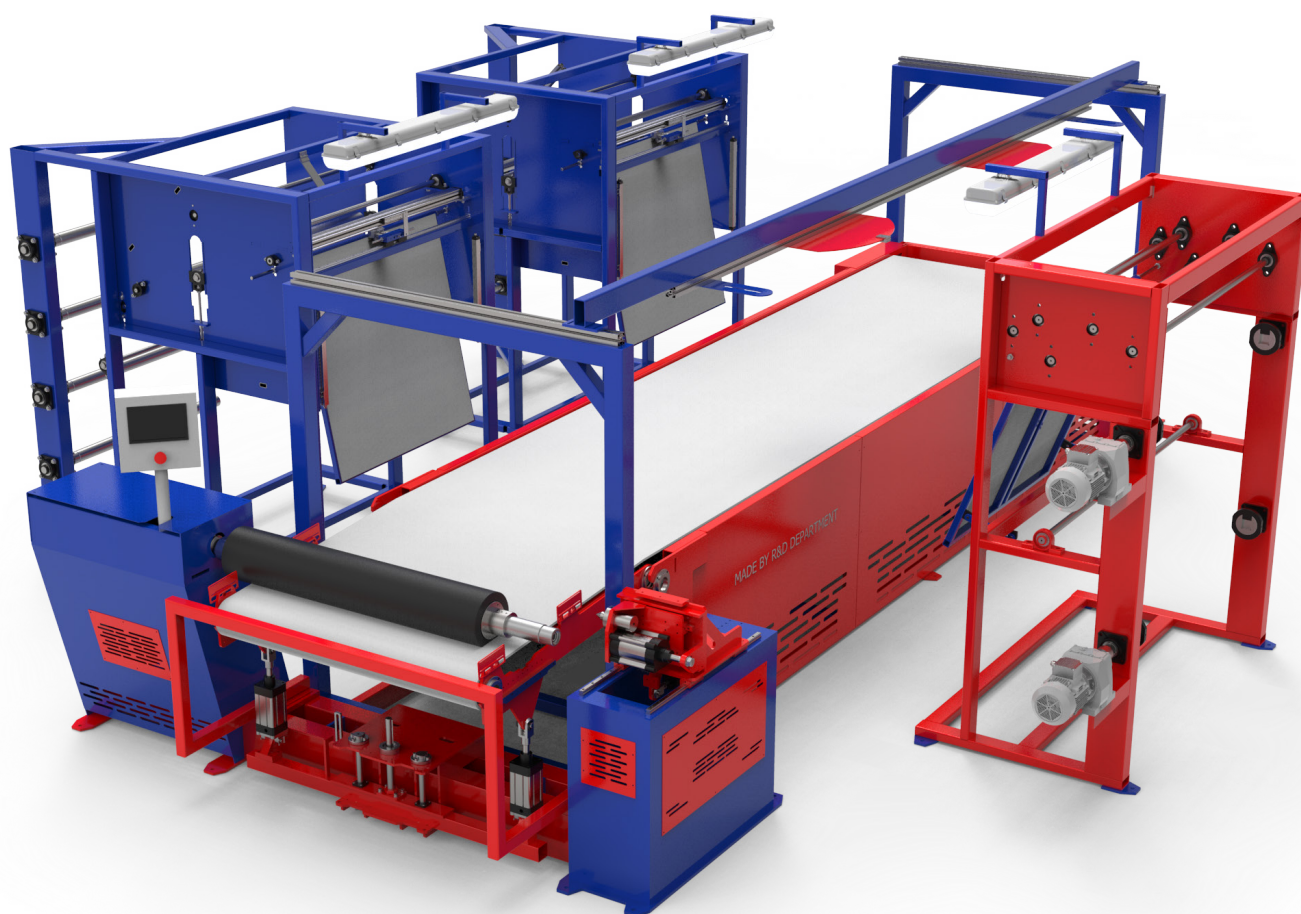
Building Drum

Dimensions	Required length and diameter
-------------------	------------------------------

Material

4140C Castermid

Shaft Diameter	Ø 50 mm
-----------------------	---------



Automatic Air Springs Building Machine

* Images may not be exactly the same as the products. Our company is not responsible for such situations.

fabioairsprings.com



**FABIO HAVA SÜSPANSİYON SİSTEMLERİ
VE YEDEK PARÇA SAN. TİC. A.Ş.**

Hasanağa Organize Sanayi Bölgesi 10. cadde No:6 16280
Nilüfer | Bursa | Türkiye

T. +90 224 484 20 55

www.fabioairsprings.com | info@fabio.com.tr